

CATALOGUE

MEGA

STANDARD FITTINGS & BRANCH OUTLETS

COMPANY PROFILE

OUR STORY WAS BORN IN 1962

Established in the year 1962 and specialized in the design, manufacturing and supplying of:

- ▲ Forged steel fittings from 1/8" up to 6" in all kind of ferrous and non-ferrous materials according to ASME B16.11, BS 3799, DIN, AFNOR standards.
- ▲ Self-reinforced branch set-in & set-on outlets dimensioned according standards: MSS SP-97, ASME B31, ASME BPV Code, TRD Stoomwezen, etc; the design of "Megalet" outlet is carried out by means of up-to-date device (CAD-CAM and Finite Elements Analysis – FEA-) providing a clear and complete technical documentation; Size from 1/8" up to 120".
- ▲ Special straight inclined flanged reinforced nozzles for Heat exchangers, Pressure Vessels & Reactors. Weight up to 40 tons.
- ▲ Special Fittings for conventional; nuclear power stations (Heavy wall Tees, "Y" pieces, Lateral tees, Reducers; Forged Pipes). Weight up to 40 tons.
- ▲ Special forgings for Subsea (Piggable Wyes, Tees, Smls Barred Tees; Target Tees, Forged Pipes, J-Lay collars, Buoyancy Tanks, Risers, Buckel Arrestors, ect). Weight up to 40 tons.
- ▲ Special designed flanges (Anchor, Riser, Swivel; Misalignment Flanges).
- ▲ Forged Seamless Pipes any size, wall thickness; materials Size from 2" up to 48" max length 12mt.
- ▲ BW Fittings to ASME B16.9 up to 8".
- ▲ Weld Overlay for Pipes up to 12mts length.
- ▲ Weld Overlay for Forgings, Fittings & Flanges.
- ▲ Pre-Fabrication & welding spools.

Above products are produced in Carbon Steels, Low Temp Carbon Steels, High Yield Steels, Cr Mo Alloy Steels, Stainless Steels, Duplex, Super Duplex Steels, SMO F44, Nickel Alloy Steels, Titanium and other Steels grades according to customer requirements.



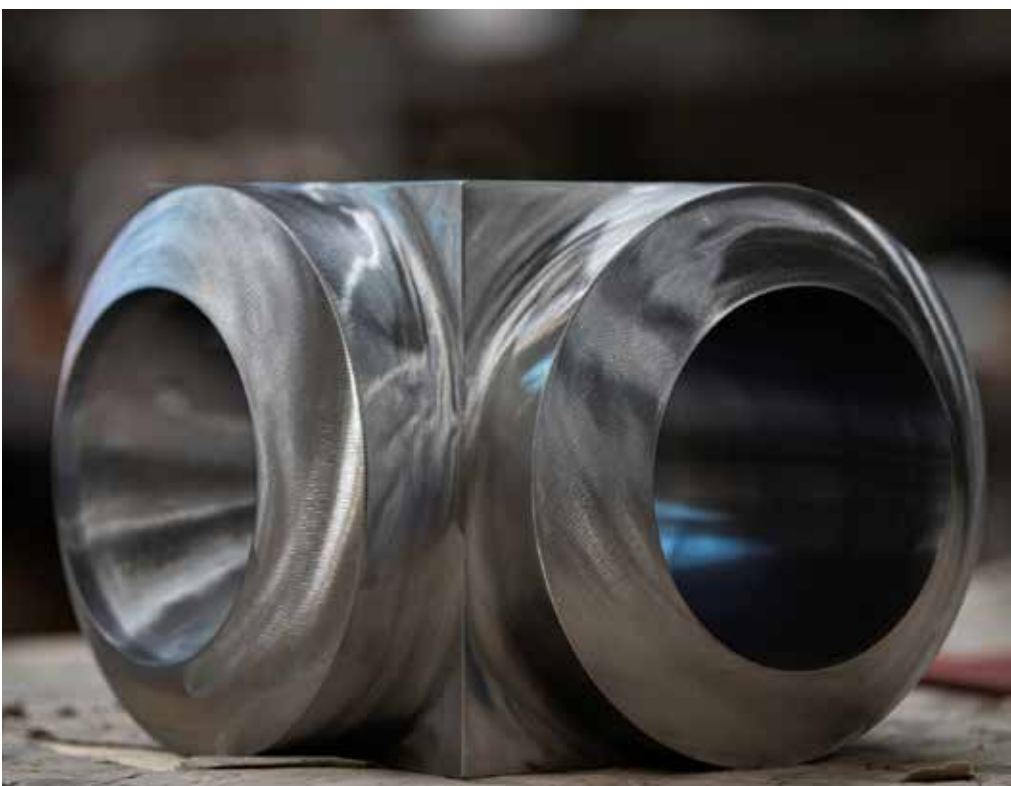
For Oil & Gas, Petrochemical, Offshore, Onshore, Subsea, Power Plant & Nuclear projects. M.E.G.A. exports its production throughout the world to distributors, end-users, and major engineering and construction companies.

ASME B16.11



ASME B16.11 is the standard for the forged steel fittings, including socket weld and threaded type. Material including carbon steel, alloy steel and stainless steel. Also described as Class 2000, 3000, 6000 threaded end fittings and Class 3000, 6000, and 9000 for socket weld end fittings.

ASME B16.11 Fittings are forged fitting with socket weld or threaded types. **M.E.G.A.** is a leading manufacturer and supplier of these fittings in different types. The Forged Socket Weld Fittings are forged in production so that they are made from a single piece of pipe with sockets welded for extra grip. The Threaded Pipe Fittings have threads on them to be fitted with components with threads. There are different pressure classes and schedules for these fittings. The 3000 Lb Socket Weld Fittings are one of the lower pressure class fittings. There are pressure classes 2000 through 9000 depending on the pipe type. The ANSI B16.11 NPT Fitting range from 1/8 inch to 4 inches in diameter for screwed or threaded fittings.



MSS SP-97

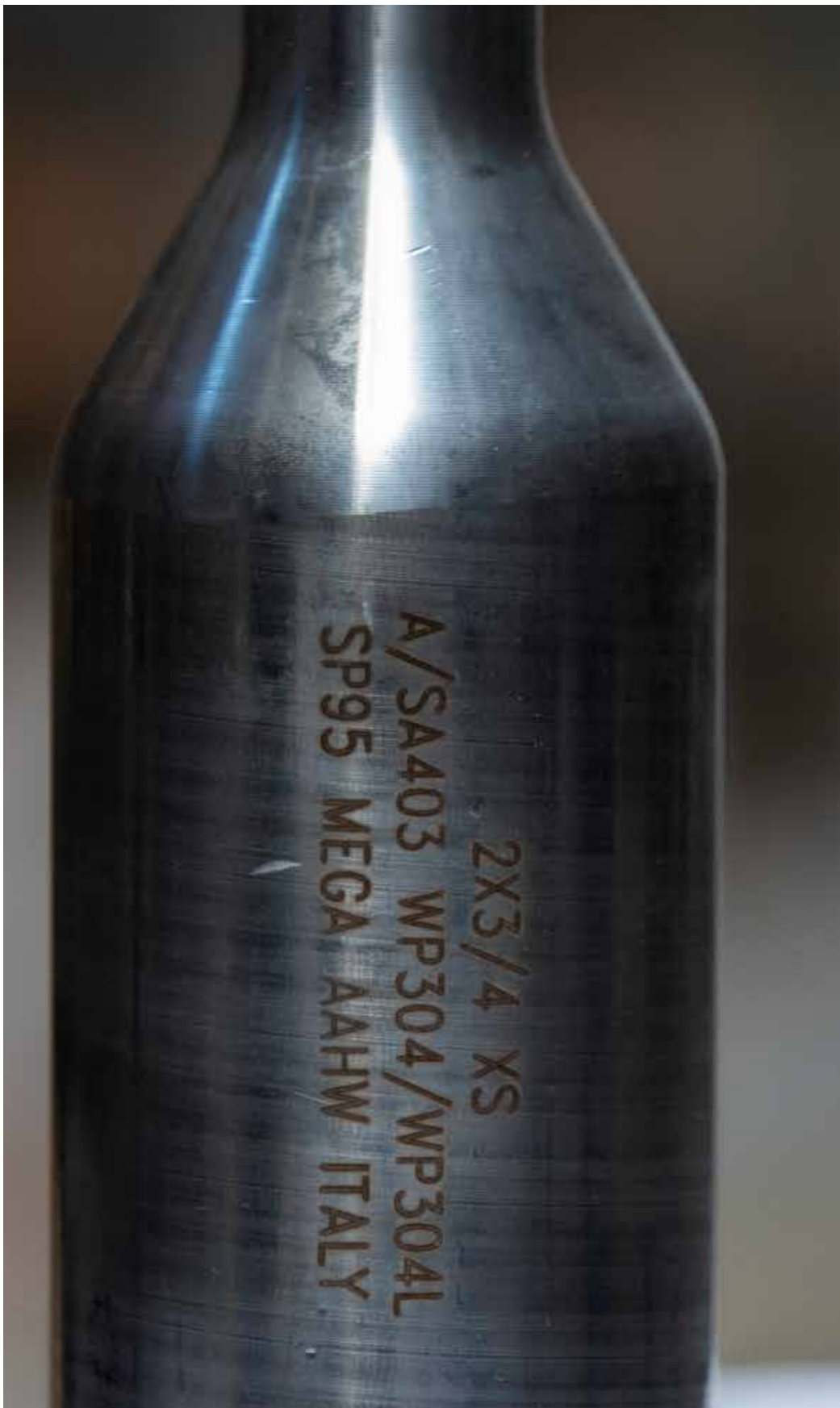
MSS SP-97 is a Standard Practice that covers essential dimensions, finish, tolerances, testing, marking, material, and minimum strength requirements for 90 and 45 degree integrally reinforced forged branch outlet fittings of butt welding, socket welding, and threaded types.

Fittings manufactured to this Standard Practice are designed to make a fully reinforced branch connection in accordance with applicable piping code requirements, when attached, at an opening in a run pipe by means of a full penetration weld. Fittings may be made to special dimensions, size, shape, tolerances, or of other wrought material by agreement between the manufacturer and the purchaser.



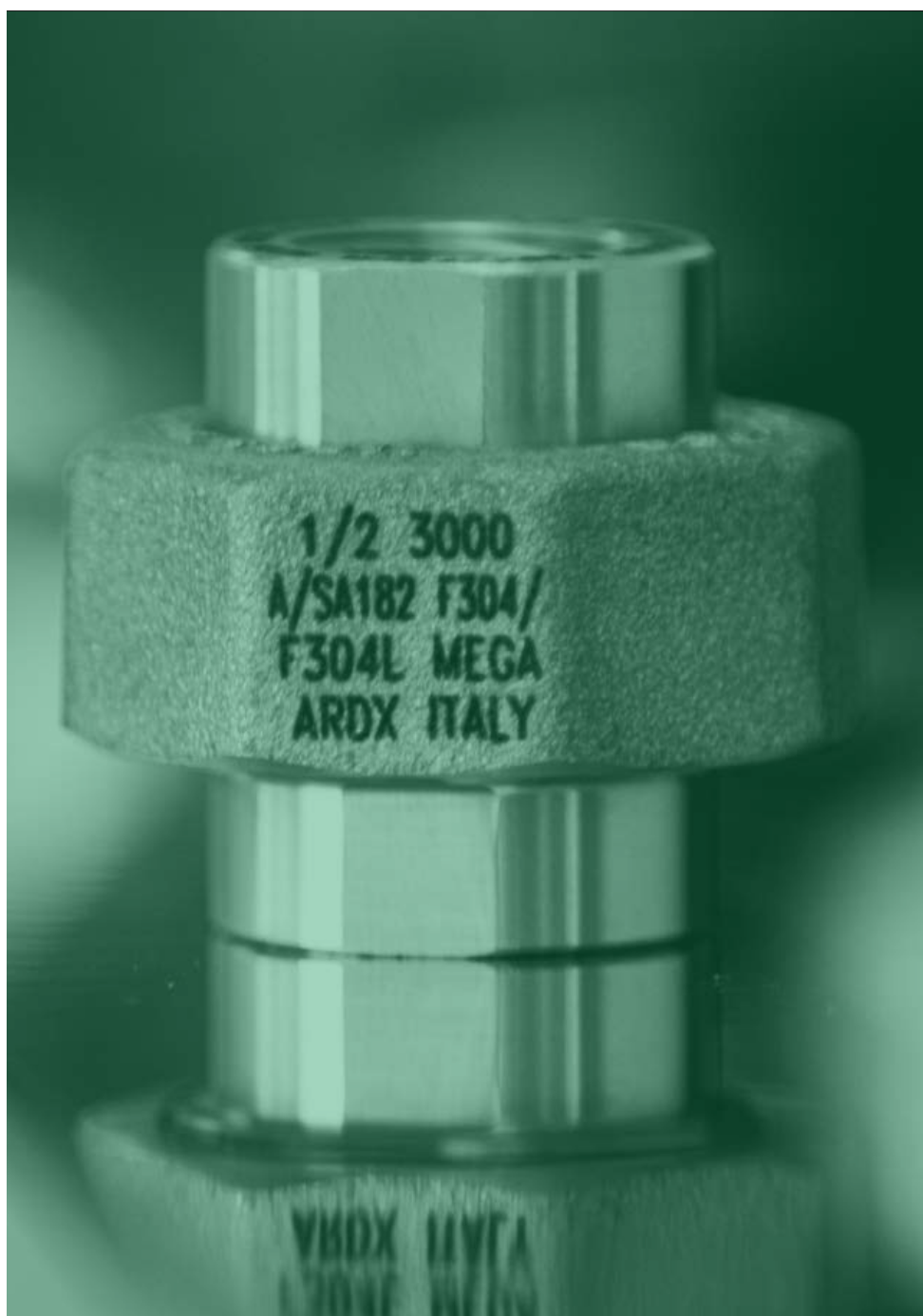
MSS SP-95

MSS SP-95 is Standard Practice which covers dimensions, finish, tolerances, marking, and material for carbon steel and alloy steel Swaged Nipples (male end reducing fittings), NPS 1/4 through NPS 12 and Bull Plugs (hollow or solid male closures) NPS 1/8 through NPS 12. These fittings are made with ends that are threaded, beveled, square cut, grooved, or any combination of these. Both concentric and eccentric Swaged Nipples are included.



MSS SP-83

MSS SP-83 is a Standard Practice which establishes envelope and other essential dimensionals, finish, tolerances, testing, marking, material, and minimum performance requirements for forged carbon and stainless steel pipe unions, socket welding and threaded ends.



CAPS

Caps can be used to close the end of a pipe or a fitting, it belongs to the family of ASME B16.11 Standard 'Forged Fittings, Socket Welding and Threaded'. Caps are available in a wide range of carbon steel, stainless, chrome-moly, and other alloys. The connection can be supplied in socket welding or threaded (usually NPT) end.



COUPLINGS AND HALF COUPLINGS



COUPLINGS

These fittings belong to the family of forgings socket-welded or threaded according to ASME B16.11 Standard. Couplings are available in all sizes up to 4in (but also 6in and 8in can be provided), classes 3000, 6000, and 9000, in a wide range of carbon steel, stainless, chrome-moly, and other alloys. The ends can be socket-weld (SW) or threaded (usually NPT).



HALF COUPLINGS

These fittings belong to the family of forgings socket-welded or threaded according to ASME B16.11 Standard. Couplings are available in all sizes up to 4in (but also 6in and 8in can be provided), classes 3000, 6000 and 9000, in a wide range of carbon steel, stainless, chrome-moly, and other alloys. The ends can be socket-weld (SW) or threaded (usually NPT).



CROSSES & TEES

Tees belong to the family of forgings socket-welded or threaded according to ASME B16.11 Standard. Tees are available in all sizes up to 4in (but also 6in and 8in can be provided), classes 3000, 6000, and 9000, in a wide range of carbon steel, stainless, chrome-moly, and other alloys. The ends can be socket-weld (SW), threaded (usually NPT), or butt-weld (BW).



Crosses belong to the family of forgings socket-welded or threaded according to ASME B16.11 Standard. Crosses are available in all sizes up to 4 inches, classes 3000, 6000, and 9000, in a wide range of carbon steel, stainless, chrome-moly, and other alloys. The ends can be socket-weld (SW), threaded (usually NPT), or butt-weld (BW).



ELBOWS



90° ELBOWS

These fittings belong to the family of forgings socket-welded or threaded according to ASME B16.11 Standard. 90° Elbows are available in all sizes up to 4in (but also 6in and 8in can be provided), classes 3000, 6000, and 9000, in a wide range of carbon steel, stainless, chrome-moly, and other alloys. The ends can be socket-weld (SW), threaded (usually NPT), or butt-weld (BW).

THREADED STREET ELBOWS

These fittings belong to the family of forgings socket-welded or threaded according to ASME B16.11 Standard. Threaded Street Elbows are available in all sizes up to 2in classes 3000 and 6000, in a wide range of carbon steel, stainless, chrome-moly, and other alloys. The ends are NPT threaded, one male and the other female.



45° ELBOWS

These fittings belong to the family of forgings socket-welded or threaded according to ASME B16.11 Standard. 45° elbows are available in all sizes up to 4in (but also 6in and 8in can be provided), classes 3000, 6000, and 9000, in a wide range of carbon steel, stainless, chrome-moly, and other alloys. The ends can be socket-welded (SW), threaded (usually NPT), or butt-welded (BW).



PLUGS



HEXAGONAL HEAD PLUGS

These fittings belong to the family of ASME B16.11 Standard 'Forged Fittings, Socket Welding and Threaded'. Used to close a threaded opening are available in a wide range of carbon steel, stainless, chrome-moly, and other alloys. The threads are usually according to NPT geometry while the other end is hexagonal.



SQUARE HEAD PLUGS

These fittings belong to the family of ASME B16.11 Standard 'Forged Fittings, Socket Welding and Threaded'. Used to close a threaded opening are available in a wide range of carbon steel, stainless, chrome-moly, and other alloys. The threads are usually according to NPT geometry while the other end is square.



ROUND HEAD PLUGS

These fittings belong to the family of ASME B16.11 Standard 'Forged Fittings, Socket Welding and Threaded'. Used to close a threaded opening are available in a wide range of carbon steel, stainless, chrome-moly, and other alloys. The threads are usually according to NPT geometry while the other end is round.

ELBO MEGALET



ElboMegalets are Branch outlets used to connect a pipe to an elbow or a bent pipe. ElboMegalets connections are in all sizes, types, bores, and classes, in a wide range of stainless steel, chrome-moly, and other alloys. The branch ends can be butt-welded (BW), socket-welded (SW), or threaded (usually NPT). ElboMegalets meet the reinforcement requirement of applicable piping codes i.e., ASME B31.1, B31.3, B31.4, and B31.8.



HEXAGONAL NIPPLES

Hexagonal Nipples are fittings used to connect pipes by means of threading. Hexagonal Nipples are manufactured in accordance with M.E.G.A. design and can be supplied in a wide range of carbon steel, stainless, chrome-moly, and other alloys.



INSERTS



SOCKET WELDED INSERTS

Inserts are produced according to the Standard Practice MSS SP-79. SW reducer Inserts are available in all sizes up to 4in, classes 3000 and 6000, in a wide range of carbon steel, stainless, chrome-moly, and other alloys.



HEXAGONAL HEAD INSERTS

These fittings belong to the family of forgings socket-welded or threaded according to ASME B16.11 Standard. Hex Head Bushings are available in all sizes up to 4in, in a wide range of carbon steel, stainless, chrome-moly, and other alloys. The ends are NPT threaded.



LATRO MEGALET

LatroMegalets SW/NPT and BW are Branch Outlet Fittings used to connect a larger pipe to a smaller one (or one of the same sizes) at an angle less than 90° (usually 45°). The main pipe onto which the branch connection is welded is usually called the Run or Header size. The pipe to which the branch connection provides a channel is usually called the Branch or Outlet size. LatroMegalets SW/NPT are in all sizes, types, bores, and classes, in a wide range of stainless steel, chrome-moly, and other alloys. The branch ends can be socket-welded (SW), threaded (usually NPT) and butt-welded (BW). LatroMegalets SW/NPT and BW meet the reinforcement requirement of applicable piping codes i.e., ASME B31.1, B31.3, B31.4, and B31.8. They are also fully complying with the Standard Practice MSS-SP-97 - 'Integrally Reinforced Forged Branch Outlet Fittings'.



MEGALETS



Megalets are Branch Outlet Fittings (also known as Olets) used to connect a larger pipe to a smaller one (or one of the same sizes) at a 90° angle. The main pipe onto which the branch connection is welded is usually called the Run or Header size. The pipe to which the branch connection provides a channel is usually called the Branch or Outlet size. Branch connections are in all sizes, types, bores, and classes, in a wide range of stainless steel, chrome-moly, and other alloys.

The branch ends can be socket-welded (SW), threaded (usually NPT) or butt-welded (BW). Megalets SW/NPT and BW meet the reinforcement requirement of applicable piping codes i.e., ASME B31.1, B31.3, B31.4, and B31.8. They are also fully complying with the Standard Practice MSS-SP-97 - 'Integrally Reinforced Forged Branch Outlet Fittings'.



NIPPLES



Swage Nipples are fittings used to connect pipes of different sizes. Swage Nipples are manufactured in accordance with the applicable Standard Practice MSS-SP-95 and can be supplied with bevel, plain or threaded ends.



Eccentric Swage Nipples are fittings used to connect pipes of different sizes. Eccentric Swage Nipples are manufactured in accordance with the applicable Standard Practice MSS-SP-95 and can be supplied with bevel, plain or threaded ends.



Pipe Nipples are fittings used to connect pipes by means of welding or threading. Pipe Nipples are manufactured in accordance with M.E.G.A. design and can be supplied in a wide range of carbon steel, stainless, chrome-moly, and other alloys.



UNIONS



Unions are three-piece fittings used for mobile connections of piping. Obtained from forgings, Unions are available in all sizes up to 4in, classes 3000 and 6000, in a wide range of carbon steel, stainless, chrome-moly, and other alloys. The ends can be socket-welded (SW), threaded (usually NPT), or butt-welded (BW). Unions are manufactured in accordance with the applicable Standard Practice MSS-SP-83 or BS 3799.

CONDITIONS

WARRANTY

All products are warranted to be exempt from manufacturing defects for a period of one year from the date of shipment, and any found to be defective within that period will be replaced without any charge, provided (1) that the product was used as recommended and in accordance with approved installation and operating practices, (2) that its failure resulted from a manufacturing defects and not from damages due to corrosive, abrasive, or other wear normally to be expected in the process involved, (3) that the product was not modified or altered (unless written approval was given by M.E.G.A.), and (4) that written notice of such defect was delivered to M.E.G.A. during the one (1) year period. No labor costs or other expense or liability is assumed. This express warranty is in lieu of and excludes all other kind of warranties, guarantees, or representations, expressed or implied. (THERE ARE NO IMPLIED WARRANTIES OF MERCHANTABILITY OR OF FITNESS FOR A PARTICULAR PURPOSE). It is discouraged to use M.E.G.A. products in aircraft or aerospace applications.

EXCLUSION

No warranties or guarantees or representations of any kind are made with respect to such scope. Purchasers assume all the risks of any use in such applications and will indemnify M.E.G.A. from any claims, costs (including attorney's fees) or liabilities arising out of such implementation.

PURCHASER'S REMEDIES

The Purchaser's remedies with respect to any product furnished by M.E.G.A. hereunder that is found not to be in conformity with the terms and conditions of the contract because of breach of contract, breach of express or implied warranty, or negligence shall be limited exclusively to the right of replacement of such defective product or, at our option, repayment of our sale price of the product. In no event shall M.E.G.A. be liable for claims (based upon breach of contract, breach of express or implied warranty, or negligence) for any other damages, whether direct, immediate, foreseeable, consequential, or special or for any expenses incurred by reason of the use or misuse, sale or fabrication of products which do or do not conform to the terms and conditions of the contract.

PRICES

Prices, and other terms of sale and payment, are subject to change without notice. Unless a contrary provision appears in this price schedule, quotation or order acknowledgment, prices may be withdrawn without notice at any time. Stenographic or clerical errors are subject to correction.

ACCEPTANCE OF ORDERS

All orders are subject to M.E.G.A. credit department approval prior to acceptance by M.E.G.A. No assignment of the Purchaser's rights may be made without the written consent of M.E.G.A.

REMITTANCES

All accounts are payable in European funds, free of exchange, collection, or any other charges. If, in the sole discretion of M.E.G.A., the financial condition of the Purchaser at any time so requires, M.E.G.A. retains the right to require full or partial payment in advance.

PARTIAL SHIPMENT & PAYMENTS

MEGA reserves the right to make partial shipments from time to time, and to render invoices therefore, which shall be due and payable as provided in said invoices and the paragraph entitled "Remittances". If the Purchaser becomes overdue in any such partial payment, M.E.G.A. shall be entitled to suspend work and/ or avail itself of other legal remedies.

TAXES

Unless otherwise specifically noted, the amount of any sale, use, occupancy, excise tax, or other tax, of any nature, federal, state, or local for which M.E.G.A. is legally liable, either initially or through failure of payment by the Purchaser, shall be added or be in addition to the price quoted and Purchaser agrees to pay the same to M.E.G.A.

SHORTAGES

Claims for shortages must be made in a written form within ten days after receipt of shipment, but loss of or damage to material in transit is the responsibility of the carrier.



CONDITIONS

WARRANTY

All products are warranted to be exempt from manufacturing defects for a period of one year from the date of shipment, and any found to be defective within that period will be replaced without any charge, provided (1) that the product was used as recommended and in accordance with approved installation and operating practices, (2) that its failure resulted from a manufacturing defects and not from damages due to corrosive, abrasive, or other wear normally to be expected in the process involved, (3) that the product was not modified or altered (unless written approval was given by M.E.G.A.), and (4) that written notice of such defect was delivered to M.E.G.A. during the one (1) year period. No labor costs or other expense or liability is assumed. This express warranty is in lieu of and excludes all other kind of warranties, guarantees, or representations, expressed or implied. (THERE ARE NO IMPLIED WARRANTIES OF MERCHANTABILITY OR OF FITNESS FOR A PARTICULAR PURPOSE). It is discouraged to use M.E.G.A. products in aircraft or aerospace applications.

EXCLUSION

No warranties or guarantees or representations of any kind are made with respect to such scope. Purchasers assume all the risks of any use in such applications and will indemnify M.E.G.A. from any claims, costs (including attorney's fees) or liabilities arising out of such implementation.

PURCHASER'S REMEDIES

The Purchaser's remedies with respect to any product furnished by M.E.G.A. hereunder that is found not to be in conformity with the terms and conditions of the contract because of breach of contract, breach of express or implied warranty, or negligence shall be limited exclusively to the right of replacement of such defective product or, at our option, repayment of our sale price of the product. In no event shall M.E.G.A. be liable for claims (based upon breach of contract, breach of express or implied warranty, or negligence) for any other damages, whether direct, immediate, foreseeable, consequential, or special or for any expenses incurred by reason of the use or misuse, sale or fabrication of products which do or do not conform to the terms and conditions of the contract.

PRICES

Prices, and other terms of sale and payment, are subject to change without notice. Unless a contrary provision appears in this price schedule, quotation or order acknowledgment, prices may be withdrawn without notice at any time. Stenographic or clerical errors are subject to correction.

ACCEPTANCE OF ORDERS

All orders are subject to M.E.G.A. credit department approval prior to acceptance by M.E.G.A. No assignment of the Purchaser's rights may be made without the written consent of M.E.G.A.

REMITTANCES

All accounts are payable in European funds, free of exchange, collection, or any other charges. If, in the sole discretion of M.E.G.A., the financial condition of the Purchaser at any time so requires, M.E.G.A. retains the right to require full or partial payment in advance.

PARTIAL SHIPMENT & PAYMENTS

MEGA reserves the right to make partial shipments from time to time, and to render invoices therefore, which shall be due and payable as provided in said invoices and the paragraph entitled "Remittances". If the Purchaser becomes overdue in any such partial payment, M.E.G.A. shall be entitled to suspend work and/ or avail itself of other legal remedies.

TAXES

Unless otherwise specifically noted, the amount of any sale, use, occupancy, excise tax, or other tax, of any nature, federal, state, or local for which M.E.G.A. is legally liable, either initially or through failure of payment by the Purchaser, shall be added or be in addition to the price quoted and Purchaser agrees to pay the same to M.E.G.A.

SHORTAGES

Claims for shortages must be made in a written form within ten days after receipt of shipment, but loss of or damage to material in transit is the responsibility of the carrier.



M.E.G.A.

M.E.G.A. S.P.A.

Via Dalla Chiesa, 3 Scanzorosciate 24020 BG ITALY

VAT 00210060166
R.E.A CCIAA BG 99195
Share Capital € 10,000,000 fully paid-up

www.mega-spa.com
sales@mega-fittings.com
Phone +39 035 66 12 80

FOLLOW US ON
[LinkedIn](#)